



Empowering Patients to Live More Harmonious Lives

Nearly 1 million Americans live with MS, with about 200 new cases diagnosed weekly. MS varies significantly between individuals and every person's journey is unique.

Octave's tailored insights and support lead to a more personalized MS care approach.

Understanding the complexity of the disease, Octave is delivering a new standard for managing MS with its precision care solution, enabling an optimal care journey for you.



Your partner in precision care
for multiple sclerosis (MS)



Your Precision Care Solution to Empower Treatment Decisions

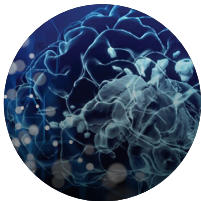


MS-Specific Blood Test

The first and only blood test that measures 18 biomarkers to assess your disease activity.

MRI for MS

By combining innovative technology with specialized MS neuroradiologists, you get high-quality MRI images and a personalized, MS-specific report to track your health over time.



Clinical Insights for Continuous Care

Ongoing communication with MS certified nurse care partners to support you and your provider between office visits to power and guide your personalized care journey.



Octave's multidimensional solution turns subjective assessments into objective knowledge and actionable insights.

Ask your MS provider to learn how Octave's innovative MS Precision Care Solution may benefit you.

octavebio.com

Connect With Us

